

The Fisher Center Discovery Program (FCDP) - Frequently Asked Questions 2022 – Round 2

Program Goals

- **Can the project be a collaborative effort with colleagues at another JHU school, university or another facility?**
Yes. One of the FCDP goals is to promote novel, cross-disciplinary collaborative clinical research, both within the Hopkins community and with our non-Hopkins counterparts.

Eligibility

- **My JHU faculty appointment is pending. May I apply as a Principal Investigator (PI)?**
No. Your appointment must be in place at the time of application. A current faculty member will be required to serve as PI. You may serve as the applicant. Within the application package, the PI may include a note concerning the impending faculty appointment. Once your faculty appointment has been fully executed, we can modify the proposal to designate you as the PI.
- **I am a part-time JHU faculty member. May I apply as a PI?**
Typically, only full-time JHU faculty may serve as the PI. Exceptions may be approved on an individual basis. Please contact the Fisher Center about your request, fishercenter@jhmi.edu.
- **I am on the faculty at another university. May I submit an FCDP application as a PI?**
No. Only Johns Hopkins University faculty members may apply as PIs. However, you may serve as a co-investigator or consultant on the research team.
- **Can a JHU medical school student included on the research team also receive funds from the JHU School of Medicine?**
The JHU SOM matriculated candidate for the M.D. degree may independently apply to the JHU SOM for supplemental funding through JHU SOM programs. JHU SOM research programs are separate from the FCDP. As such, it will be the responsibility of the student to comply with all JHU SOM requirements regarding the application, completion and administration of JHU SOM programs.
- **Can a JHU medical school student who is included on the research team receive academic credit from the JHU School of Medicine?**
Work accomplished on behalf of the FCDP may not be credited toward the achievement of an academic degree without the written permission of the JHU SOM.

Project Topics

- **What does the phrase “Environmental Infectious Diseases” mean?**
Environmental ID includes human disease-causing pathogens found primarily in environments, which differs from disease transmitted primarily as human-to-human. Examples are pathogens found in the air, soil and water, as well as vector-borne or zoonotic diseases. Human pathogens with a significant association with built environments (home, hospital, and community) also qualify.

- **What are clinical research topics of particular interest to the Fisher Center Discovery Program?**

Applicants are strongly encouraged to review the section *Project Topics* (page 4 of the [FCDP Application Guidelines](#)). The FCDP funds understudied or underfunded environmental infectious diseases. Projects will have a competitive advantage if directly relating to environmental infectious diseases affecting human health in North America. Other favorable aspects include the potential for broad impact and early career investigator as the applicant. Also considered are international projects that would be difficult to carry out domestically, but have a health impact in North America.

- **What about COVID-19/SARS-CoV-2 topics?**

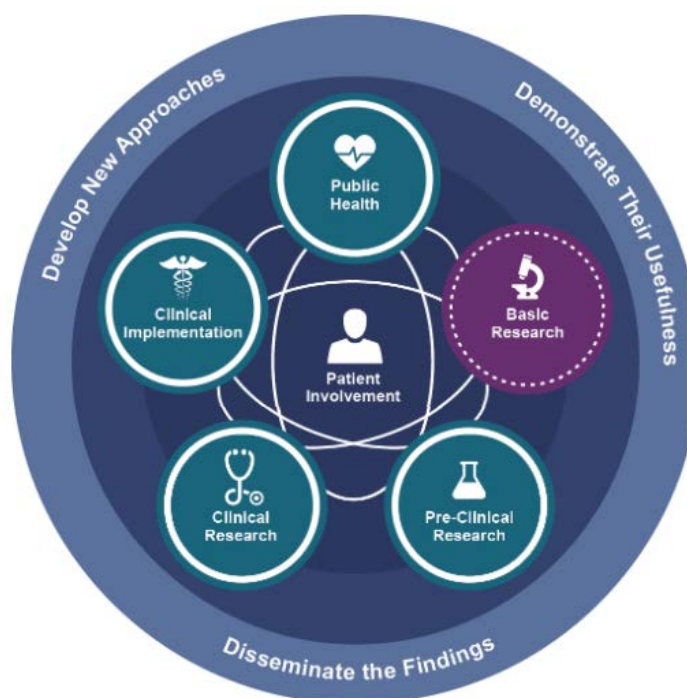
In response to the continuing COVID-19 pandemic, in Round 2 we also offer the funding opportunity for clinical and translational research related to COVID-19 and SARS-CoV-2. Submissions with both a COVID-19/SARS-CoV-2 and environmental focus (e.g., built environments, environmental transmission) will receive special funding consideration. If you have questions regarding whether a COVID-19/SARS-CoV-2 proposal would be appropriate for the Fisher Center Discovery Program, please submit a Letter of Intent.

- **I am primarily a bench researcher. Am I eligible for FCDP funding?**

The Fisher Center is dedicated to the clinical and translational research of environmental pathogens that improves the prevention, diagnosis or treatment of infections causing human disease. Support of laboratory research will be considered if clearly part of a translational or clinical research project.

- **What is translational research?**

Translational research may be defined as research that facilitates the rapid and efficient translation of basic science findings to clinical applications that enhance human health. To facilitate “bench to bedside” research, the NCRP of NIH launched the Clinical and Translational Science Awards (CTSA) Consortium in 2006, of which the Johns Hopkins ICTR unit is a member. From the website of the [National Center for Advancing Translational Sciences](#) comes a diagram that succinctly explains the concept of translational research.



CTSA-funded institutions aim to accelerate scientific discovery along the entire biomedical research continuum, from basic science to patient studies to clinical practice, using an integrated approach. Information sharing at each stage of the process ensures that researchers are meeting community health needs, and that progress in the clinic, in turn, informs the work in the laboratory.

Monetary Support and the Budget

- **Is salary support limited to Johns Hopkins University employees?**
No. However, the budget must conform to the requirements as outlined in the section *Monetary Support* (page 5 of the [FCDP Application Guidelines](#))
- **If a co-investigator is beyond the level of Assistant Professor, may they receive salary support?**
No. No member of the research team (PI, co-investigator, consultant, etc.) may receive salary support if they are beyond the level of Assistant Professor.
- **Is it okay to request personnel funds now, and if awarded, submit an addendum with that person's full name and credentials?**
Yes. On the budget template under the name, write TBD (to be determined). List the role accordingly.
Example: Research Coordinator, TBD
- **Can international studies receive FCDP support?**
International projects may be submitted and will be considered by the FCDP Advisory Board if not easily performed domestically or have implications for healthcare in North America. Applicants with questions about international proposals are encouraged to submit a letter of intent before writing their grant proposal.
- **Do I have to account for indirect costs in the budget?**
No. Indirect costs have already been accounted for.
- **Does the research go through the Office of Research Administration (ORA)?**
The FCDP is privately funded and therefore is not administered by the ORA. However, some subcontracts, such as those for laboratory testing, may require ORA administration of the contracts. If so, it is the responsibility of the PI to interact with the ORA of their JHU affiliated school.
- **If awarded, does the FCDP manage my funds?**
No. Awarded funds are released to the PI as an internal order (IO) or cost center (CC) number, per financial practices of the JHU affiliated school. However, periodic SAP Non-sponsored YTD Transactional Detail Reports are to be generated and sent to the FCDP for review and record keeping. Please review the section *Post Award Requirements* (page 11 of the [FCDP Application Guidelines](#)).
- **Do I need to submit budget justification?**
Not necessarily. The budget justification is typically not requested. However, if the total salary support or total laboratory supplies, equipment, and service support exceeds the 50% cap of the total requested award, then written justification is required. For details, please review the section *Monetary Support* (page 5 of the [FCDP Application Guidelines](#)).

Application Documents

Do the protocol citations need to be in a specific format?

No. Please use the citation format most commonly used in your JHU affiliated school.

• Are biosketches required?

An NIH-style biosketch is the preferred option. A CV or résumé may be substituted in cases where a biosketch is not available.

• Some members of my research team do not have a biosketch, curriculum vitae, or résumé. Are these documents really necessary?

Yes. Biosketches, CVs, or résumés of the PI and coinvestigators must be sent with the application. In addition, these documents are required for any personnel funded by the grant, such as research nurses, study coordinators, lab personnel, technicians, etc. The biosketch, CV, or résumé offers the reviewers background on the research team regarding education, experience, and research interests. Since a biosketch, CV, or résumé is an important component of an academic career, it is good practice for all members of a research team, regardless of faculty status, to maintain a current biosketch, CV, or résumé.

• Do I need to submit both a biosketch and CV?

No, please submit one or the other. Do not submit both a biosketch and a CV. Due to its typically shorter length, a NIH-style biosketch is preferred.

• Is there a specific format or template for the biosketch, CV, or résumé?

The biosketch, CV, or résumé may be submitted using the current template specific to the team member's JHU affiliated school or current institution. Please number the document pages.

• Is a letter of support required if the co-investigators are JHU faculty members?

There are two types of letters of support: a. If the applicant does not have JHU faculty status, then a full-time JHU faculty person must serve as PI and must provide a letter of support. b. The reviewers prefer letters of support from co-investigators on the research team, especially those that are not JHU affiliated. Letters of support let the reviewers know the co-investigators are indeed onboard with the research project and will support it. This second type letter of support is not a requirement, but may be helpful to the reviewers and is strongly encouraged.

Submission of the Application Package

• Where do I find the application?

The [application and supporting documents](https://hopkinsinfectiousdiseases.jhmi.edu/research/research-areas/environmental-id/fisher-center-discovery-program-grants/) are available on the Infectious Diseases website, Fisher Center pages: <https://hopkinsinfectiousdiseases.jhmi.edu/research/research-areas/environmental-id/fisher-center-discovery-program-grants/>

• What completed documents should be included in the final application package?

- Application (PDF fillable form)
- Protocol
- Budget (must use the FCDP template)

- Budget justification, if salaries exceed 50% of the monetary request
 - Budget justification, if laboratory supplies, equipment, and services exceed 50% of the monetary request
 - Letters of support (PI mentor and/or collaborators)
 - Biosketch, curriculum vitae (CV), or résumé of the PI and all coinvestigators. In addition, all research team members receiving salary support.
- **I am unable to submit all components of the application package in one email. What should I do?**
If the documents exceed the email file size, then please send the remaining documents in a second email.
 - **How do I submit the application and supporting documents**
Send the completed application package in a single email, if possible, to fishercenter@jhmi.edu. If the documents exceed the email file size, then please send the remaining documents in a second email.

Contact Us

Our staff is here to help you. Please feel free to contact us.

The Sherrilyn and Ken Fisher Center for Environmental Infectious Diseases

Phone 443-287-4800 (ask for the Research Manager)

Fax 410-502-7029

Email fishercenter@jhmi.edu (preferred contact method)

Website [Fisher Center Discovery Program](#)

<https://hopkinsinfectiousdiseases.jhmi.edu/research/research-areas/environmental-id/fisher-center-discovery-program-grants/>